



GREATER
ZURICH
AREA

The Silicon Valley of Robotics

Rolf Bühler, Director Europe, November 21, 2023

Greater Zurich Area

A successful Public-Private-Partnership

Supported by more than 30 companies,
11 local governments and Switzerland's leading
universities including ETH Zurich & University of Zurich.



BARANDUN
LEGAL & TAX

CREDIT SUISSE

eawag
aquatic research

EBP

Empa
Materials Science and Technology

ETH zürich

Flughafen Zürich

Glarner Kantonalbank

Graubündner Kantonalbank



HOLCIM

IWG
International Workplace Group

KRESTON A&O

LUNCH-CHECK

ML

MME
Legal | Tax | Compliance

Schaffhauser Kantonalbank

STEINER

SwissLife

SWISS PRIME SITE

Swiss Re

TECH CLUSTER ZUG

UBS

Universität Zürich
UZH

VISCHER
SWISS LAW AND TAX

Zuger Kantonalbank

ZÜRCHER HANDELSKAMMER

Zürcher Kantonalbank

ZURICH

Get access & grow

Greater Zurich Area Ltd is the official Economic development agency of Zurich and surrounding Swiss Cantons. Together with our governmental, private and academic partners, we help you to expand your business into Switzerland, set up, grow and prosper - all free of charge.

We help you for example with:



Site selection support, site visit tours, comparative data, office space search & setting up shop



Get connected to service providers, recruiters, ecosystem players, technology experts and corporate & university research & development partners



Information about venture capital opportunities, grants & incentives

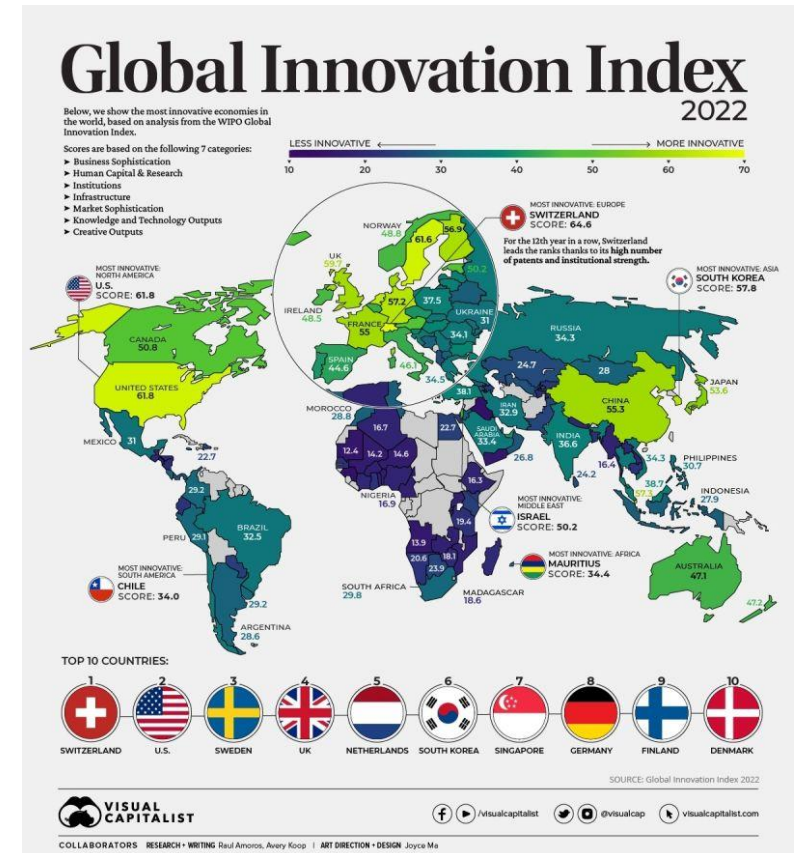
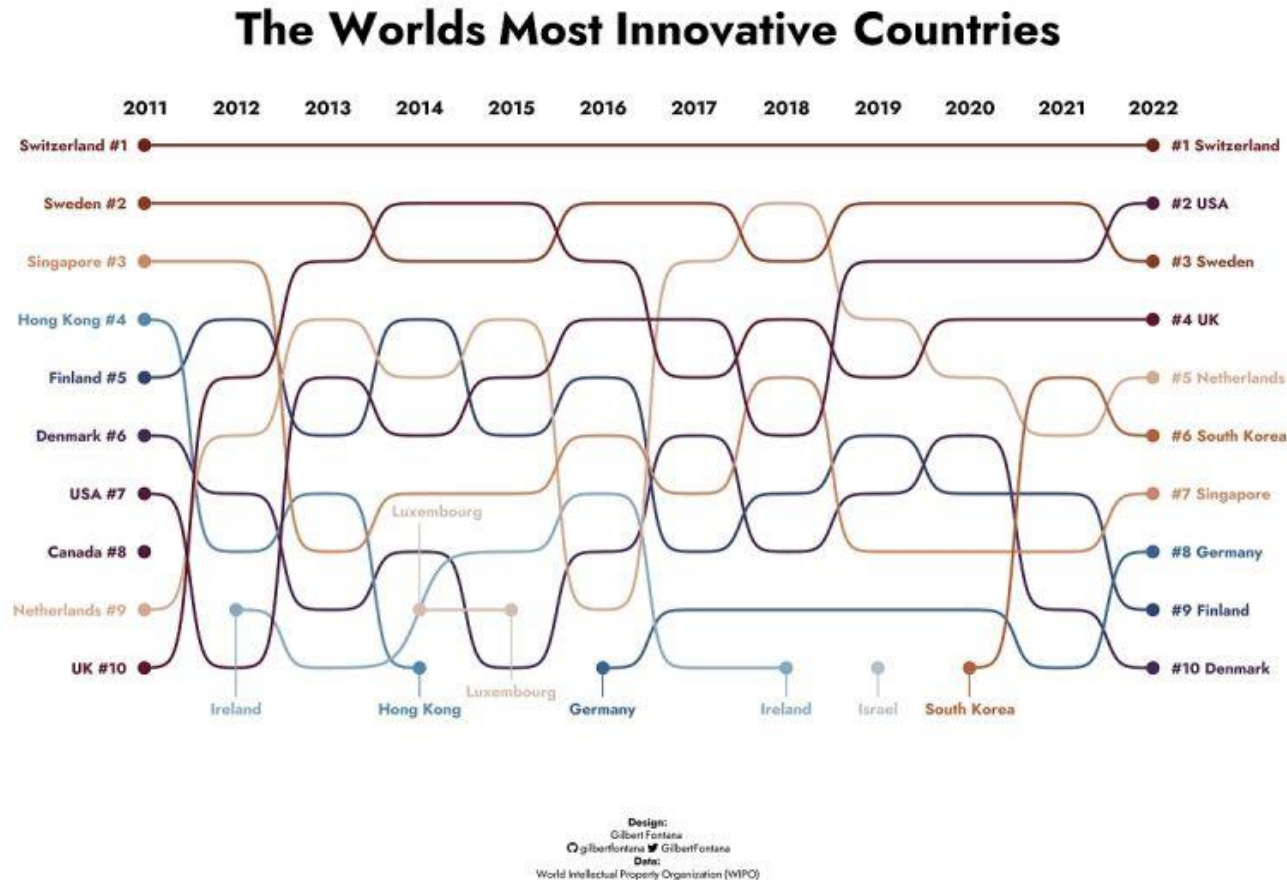
Technology companies GZA recently helped to expand:



GZA - the Robotics Innovation Hub

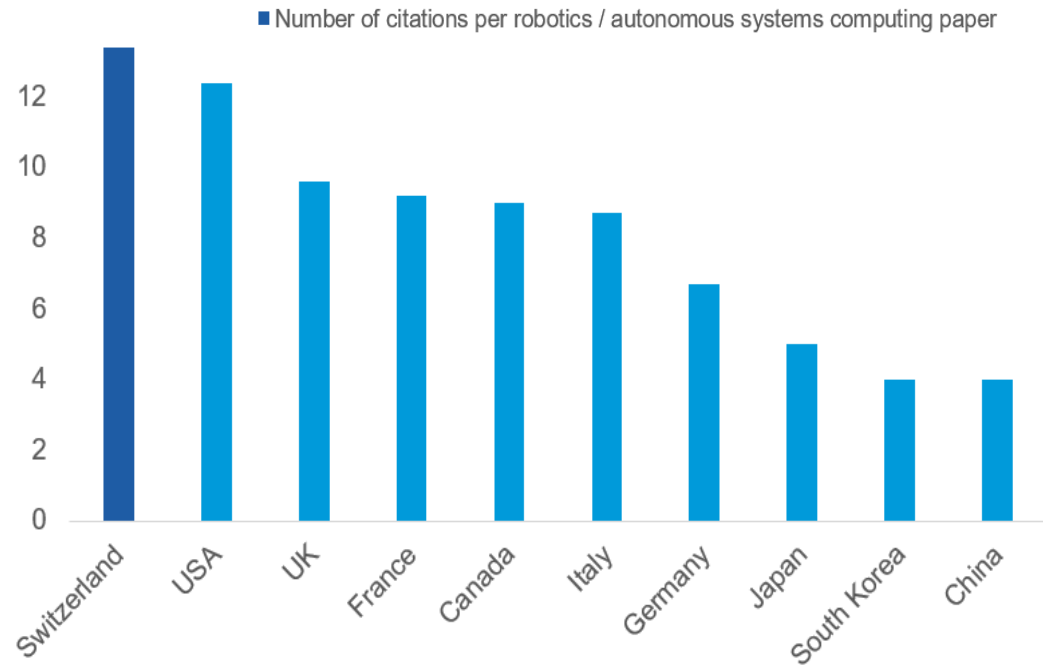
Global Innovation Index

Switzerland has been the global innovation leader for many years



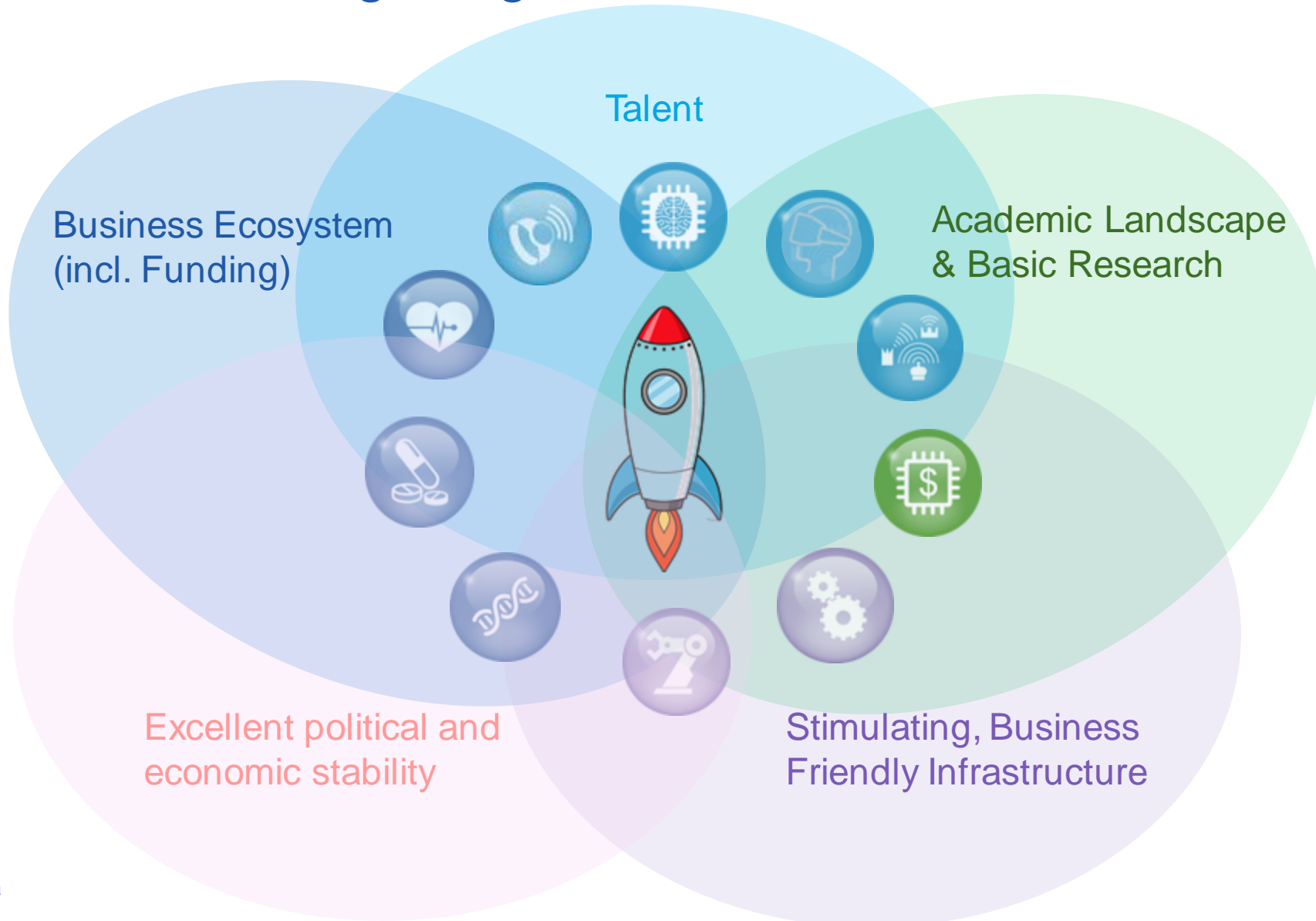
“The Silicon Valley of Robotics & Autonomous Systems” (Forbes 2017)

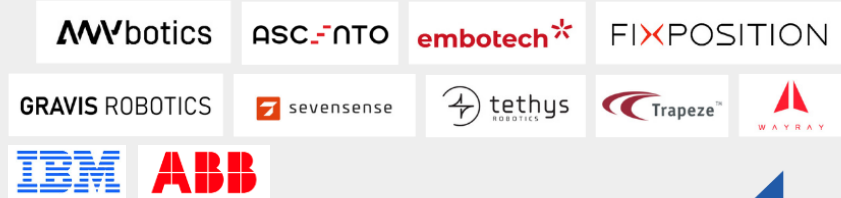
Global #1: influential research and development



- Switzerland is one of the first movers when it comes to AI adoption and research.
- Greater Zurich is a global leader in the Artificial Intelligence space
- 20 of the 30 most disruptive Swiss robotics & AI startups are based in Greater Zurich
- Greater Zurich averages the **highest number of AI companies per citizen**.
- #2 most influential metropolitan region in terms of holding world-class patents in automation and robotics

Why? GZA has all the right ingredients





Autonomous ground companies

Technology and components for autonomous systems



100+ key players

Autonomous Systems in Greater Zurich

Universities & Academic Research



Public organizations, Regulation & Platforms



Medtech & Rehabilitation



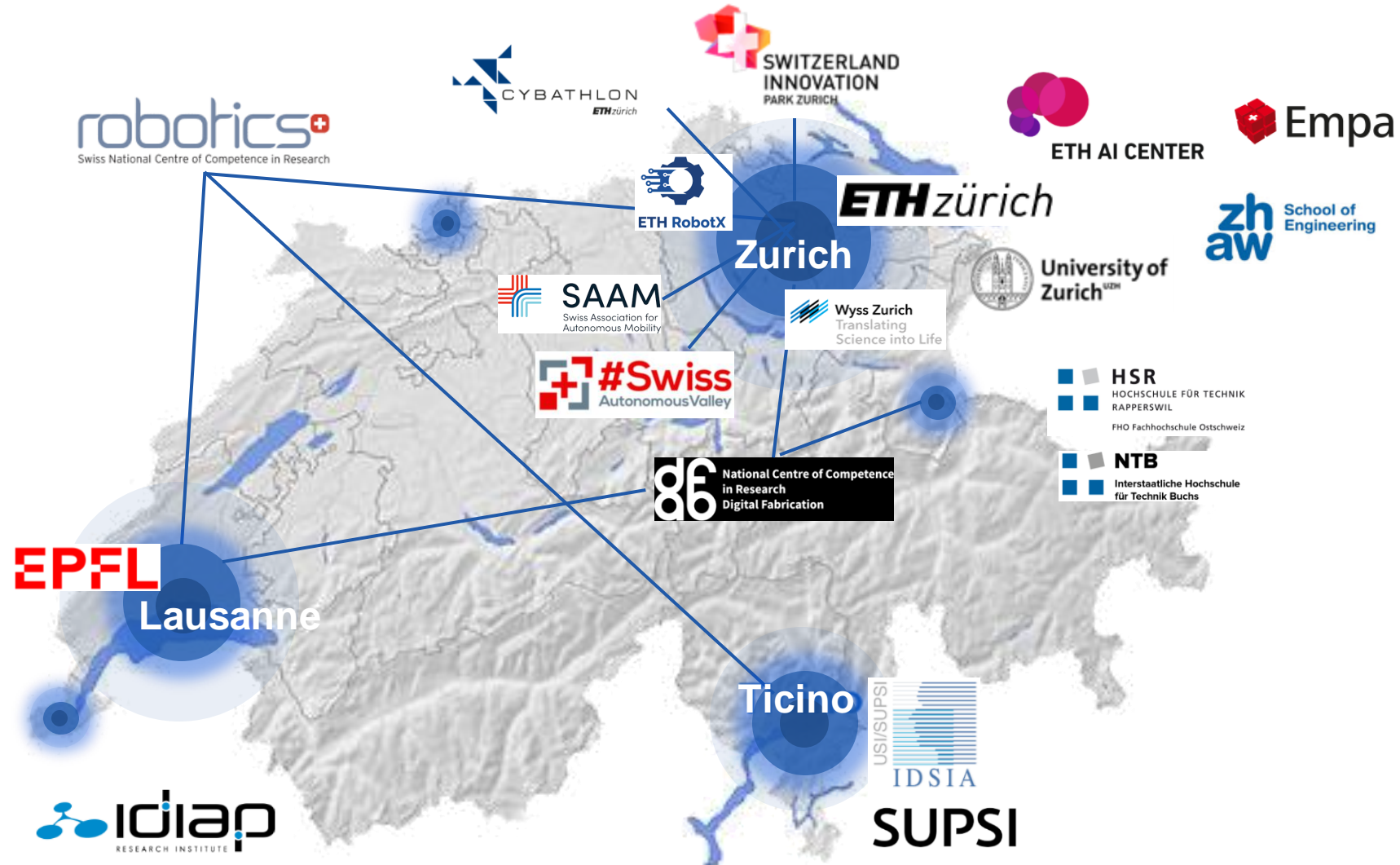
Autonomous flying companies



Computer Vision



Switzerland – A melting pot for robotics technology



Robotics – world leading professors in Greater Zurich

Artificial Intelligence

Andreas Krause



Joachim Buhmann



Christian Holz



Bradley Nelson



Medical & Rehabilitation Robotics

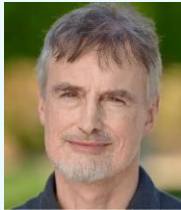
Rogert Gassert



Walter Karlen



Jürgen Schmidhuber



Roland Siegwart



Marco Hutter



Emilio Frazzoli



Robert Riener



Davide Scaramuzza



Margarita Chli



Autonomous Systems

Luc van Gool



Otmar Hilliges



Dynamic & Control

Raffaello D'Andrea



Melanie Zeilinger



Marc Pollefeys



Tobi Delbruck

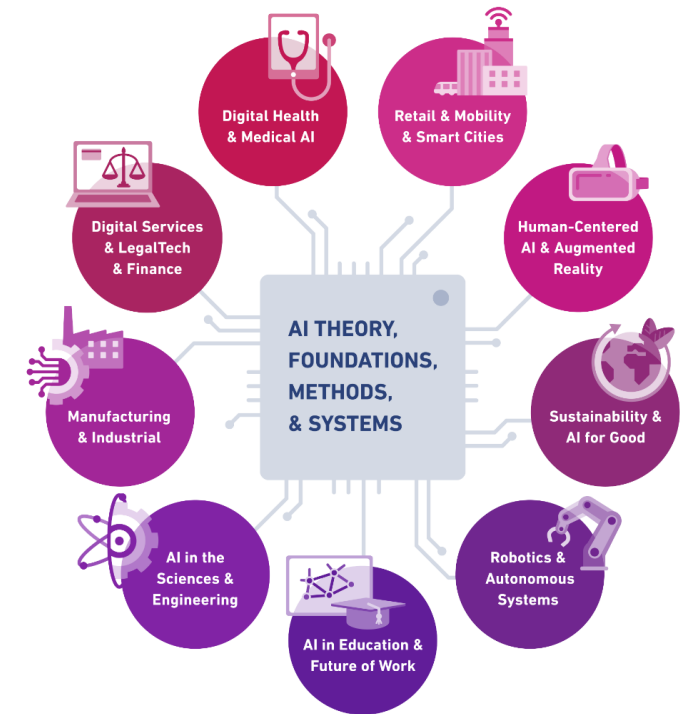


Computer Vision

ETH AI Center: Central Hub for artificial Intelligence



As ETH's central hub for artificial intelligence, the AI Center brings together >110 professors, 60 PhDs and researchers of all walks of AI across all ETH departments, fostering interdisciplinary research excellence, industry innovation, and AI entrepreneurship to promote trustworthy, accessible, and inclusive AI systems.



Our mission in seven priorities

1. Create the central AI hub at ETH across all disciplines
2. Collaborate with the best researchers internationally (e.g. ELLIS & CLS)
3. Identify & foster AI researchers, transformational leaders & entrepreneurs
4. Provide a stimulating, transdisciplinary, and inclusive environment
5. Address ethical, societal, and policy implications
6. Engage the general public on AI topics
7. Support start-ups & industry collaborations

Our mindset

- Co-evolve AI foundations & impact areas
- Co-locate all disciplines
- From research to industry & start-ups

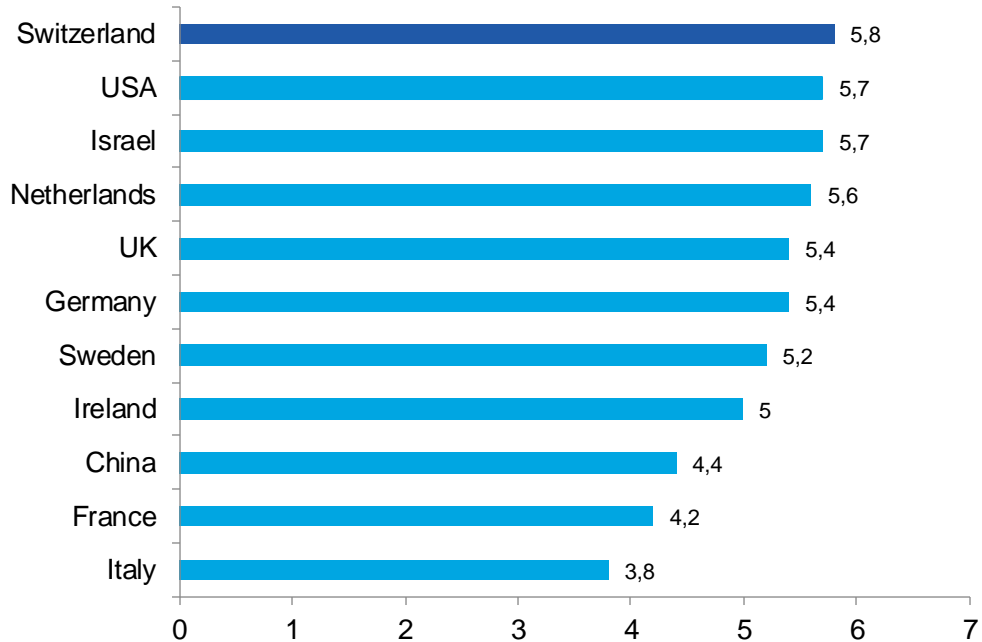
Facts & figures

- Building on decades of AI research at ETH
- 96 Professors
- >40 new positions
- 980m² physical center
- >50 AI ETH spin-offs

	Company size	Partnership fee p.a.
Small companies	<100 employees	10k CHF
Medium companies	100 – 1 000 employees	25k CHF
Large companies	>1 000 employees	50k CHF

Industry-University collaboration - nowhere better than in Switzerland

University-Industry Collaboration Index



Source: WEF Global Competitiveness Report 2019
Graph shows scores of selected countries, complete set: Switzerland #1

Established Industry Collaborations of ETH Zurich



Greater Zurich Area Ltd. facilitates industry / university partner evaluations and helps to find the right academic match for international companies.

Leading technology companies tap into the strong ecosystem

Facebook/ETH Labs

- Project Santa Cruz: 2018 expansion of R&D teams and offices
- Joint development of next generation Oculus core technology
- Acquisition of ETH/Wyss Center's "Zurich Eye" spin-off
- >200 developers, and rapid growth
- Focus: virtual und mixed reality

IBM Research Zurich

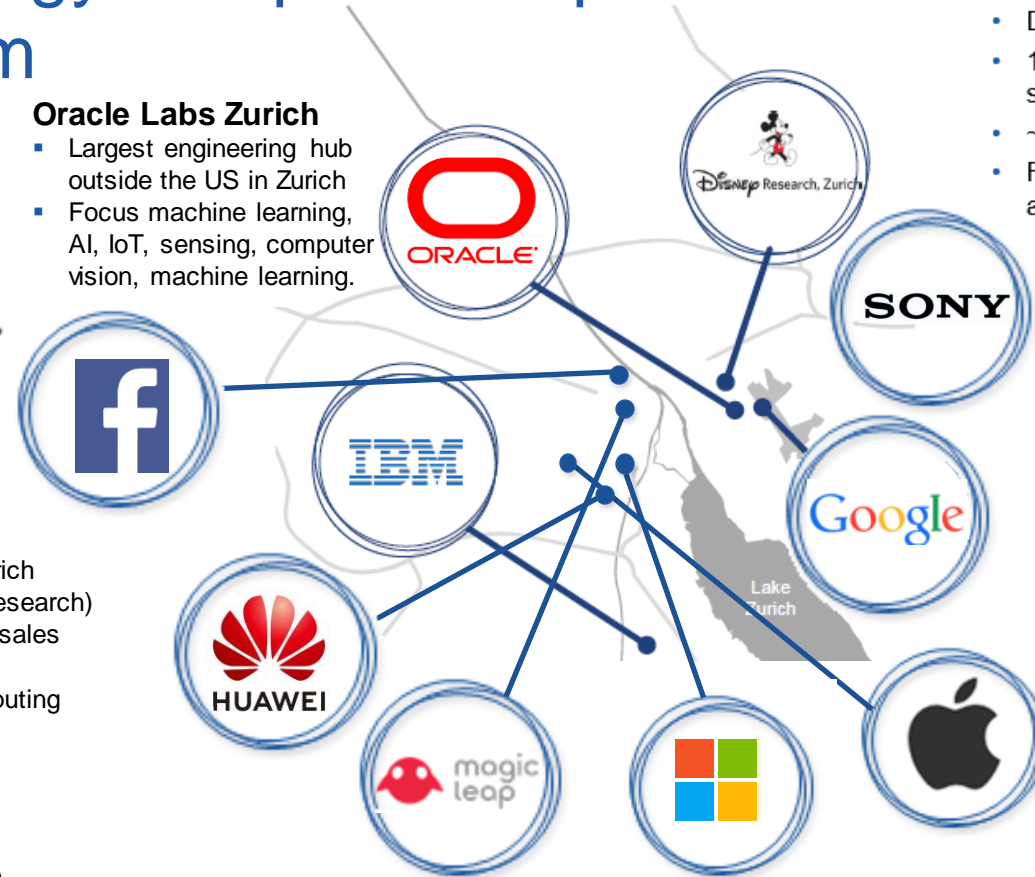
- One of IBM's 12 global research labs. In Zurich since 1956 (first European branch of IBM Research)
- Zurich: > 2000 employees, \$73.62 billion in sales
- Focus Zurich Lab: cutting-edge research in Quantum technology, AI and cognitive computing technologies, blockchain

Huawei Zurich Research Center (ZRC)

- focused on fundamental research in the area of future computing systems (innovation on hardware, software and algorithmic design).

Oracle Labs Zurich

- Largest engineering hub outside the US in Zurich
- Focus machine learning, AI, IoT, sensing, computer vision, machine learning.



Disney Research Zurich

- Est. 1992, ETH collaboration since 2010
- Directed by ETH Prof. Markus Gross
- 13 joint PhD students with ETH, >60 ICT specialists
- ~200 joint papers, >100 patents
- Focus: computer graphics, 3D animation and face modelling, video of the future

Sony AI Zurich

- Focus sensing, computer vision, machine learning

Sony Advanced Visual Sensing

- Artificial vision systems

Google Research Labs Zurich

- Biggest engineering and R&D hub outside the US, est. 2016
- Multiple research projects with div. universities
- 2018: expansion to Europaallee
- 5'000 empl. from 75 countries
- Focus: AI, machine learning and perception, algorithms

Apple Inc.

- Acquisition of Facehifi (2015) and Fashwell (2019) ETH spin-offs
- Since then, continuation of close collaboration with ETH
- Focus: perception, machine vision & deep learning

Microsoft Research Zurich

- Multiple research projects with ETH since 2008, first joint research center est. in 2013
- New Mixed Reality & AI Lab, est. 2019, headed by ETH Prof. Marc Pollefeys
- > 20 researchers and growing
- Focus: Computer vision (HoloLens), AI, data security

Magic Leap

- Competence Center for AI and deep learning
- 2017 acquisition of ETH AR Spin-off Dacuda
- >100 employees
- Focus: R&D in computer vision and deep learning solutions, with multiple partnerships with academic institutes such as ETH Zurich.

ANYbotics



ANYbotics

The ETH spin-off ANYbotics sets new standards with its mobile quadrupedal robot ANYmal which manages to operate autonomously in highly challenging terrain and interacts safely with the environment. ANYmal conducts for example autonomous inspections in the Brazilian mining industry or at global giant BASF chemical plants.

Also, ANYmal proofed his superiority in DARPA's latest highly anticipated SubT final challenge where it stood its ground against competitors, including the renowned creations by Boston Dynamics and was ranked #1.

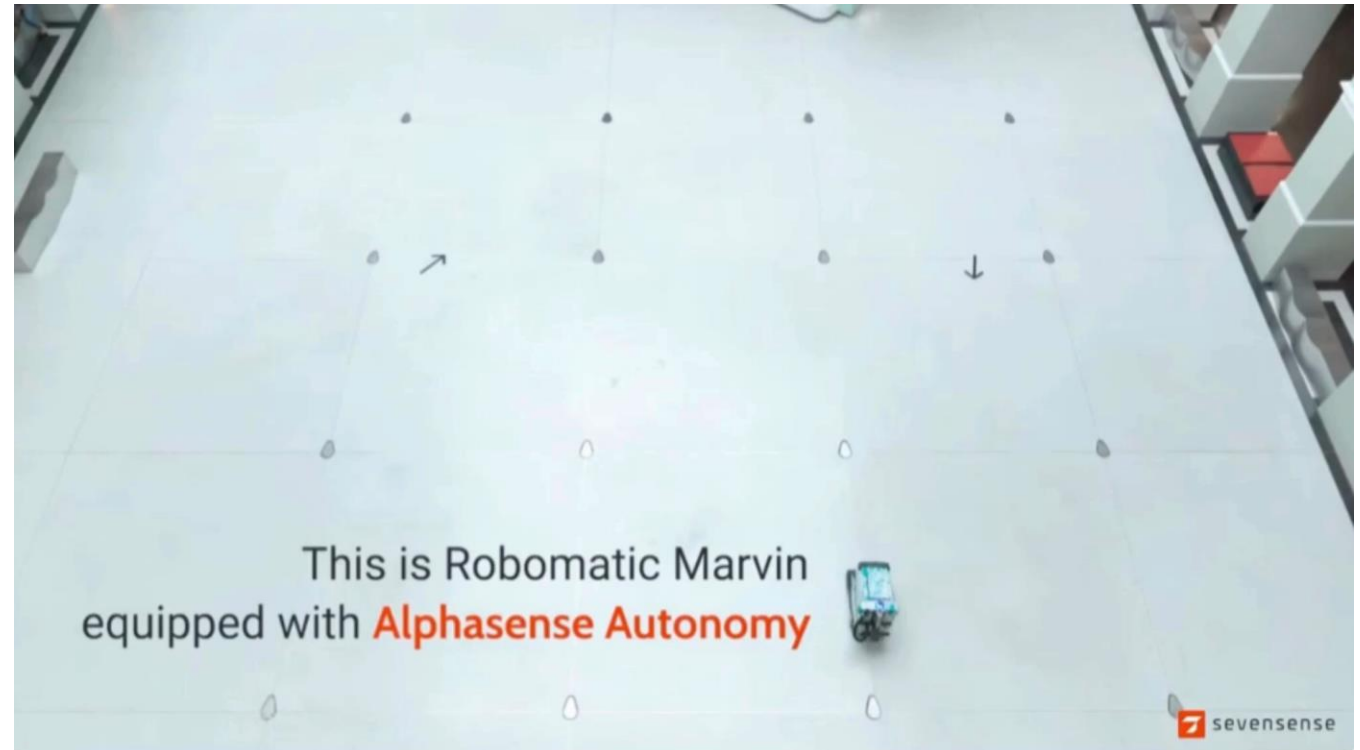


Sevensense Robotics



Sevensense Robotics develops computer vision and AI solutions for the next generation of mobile robots. Their technology enables robots to navigate safely and autonomously in dynamic environments, both indoors and outdoors.

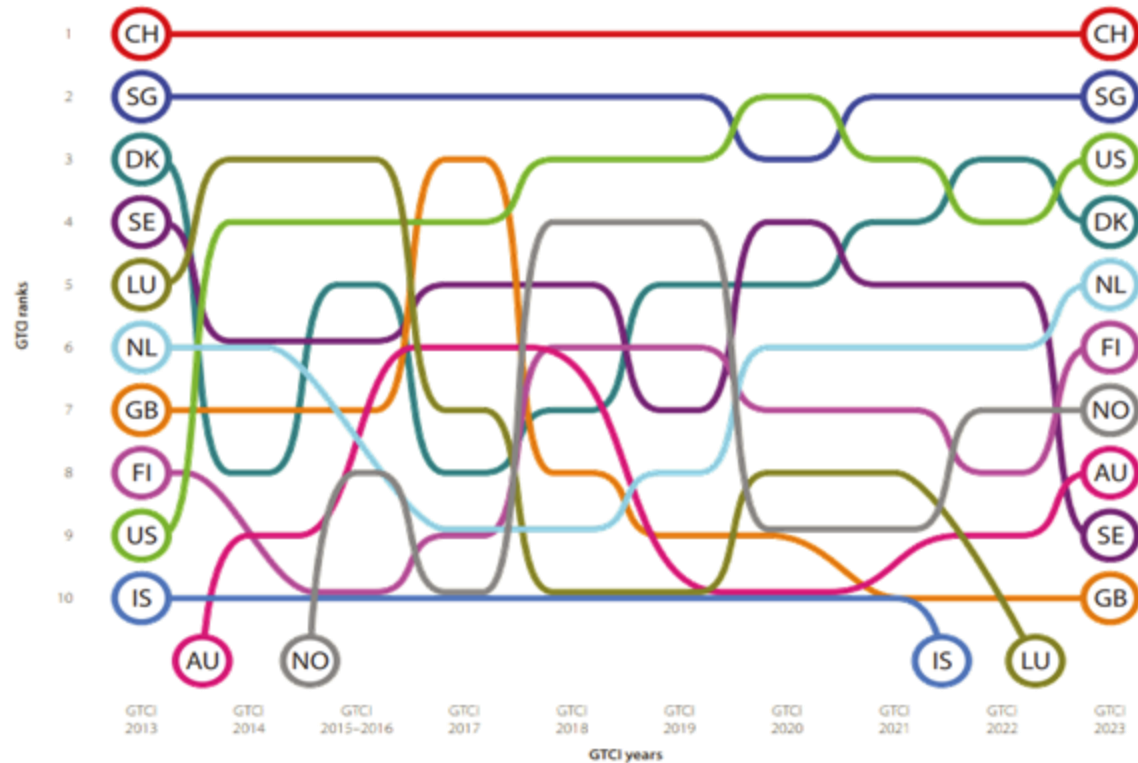
With over 15 years of research at ETH Zurich Sevensense sets the standard for service robotics and successfully supplies logistics and cleaning companies



Unique Talent Pool

THE GLOBAL TALENT COMPETITIVENESS INDEX (GTCI) 2023

DECADE OF TOP 10

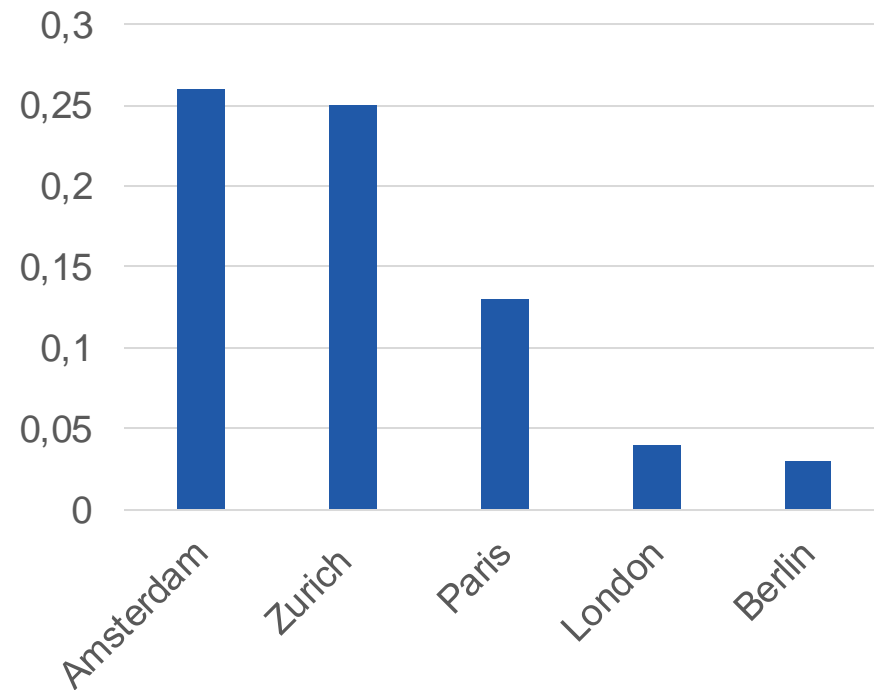


Zurich stands out as a diverse city with the highest percentage of the labor force with tertiary education and strong private sector investment in training.

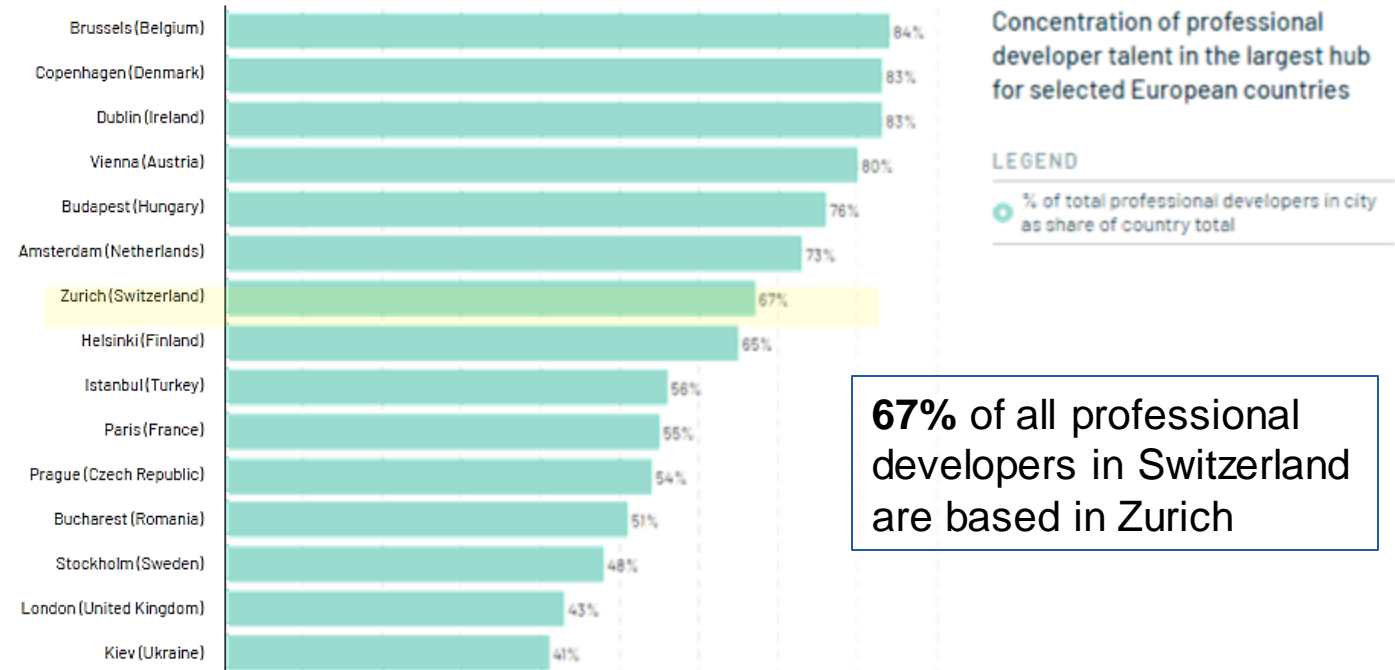
IT Talent: Professional Developers: City Comparison

Greater Zurich is one of Europe's top technology and IT hubs and Switzerland's IT "talent factory" with a high density of software developers available in that region. With over 4700 IT students/PhDs and roughly 1600 graduates per year, Zurich fosters over 70% of Switzerland's IT offspring and is home to over 60% of all IT professionals in Switzerland.

Software developers per capita



Distribution within each country



67% of all professional developers in Switzerland are based in Zurich

... and the Robotics-Hub is going to grow bigger ...



ETH zürich

ETH in the Innovation Park – Robotics and Mobility

Visualization of hangar 3, where ETH Zurich will soon move in as anchor tenant...
The first focus will be robotics and mobility

Switzerland Innovation Park Zurich is a visionary project offering 71 hectares of developed and undeveloped land, testing sites, drone cages, labs, office space and joint technology platforms for R&D and the performance of joint innovation projects between corporations and academia (ETH Zurich, University of Zurich and Universities of Applied Science). Robotics and autonomous systems will be a central vertical of the Innovation Parc Zurich.

Your Contact

Let's talk!



Rolf Bühler
Director Europe

+41 44 254 59 12

rolf.buehler@greaterzuricharea.com



[@GreaterZurich](https://twitter.com/GreaterZurich)



[linkedin.com/company/greater-zurich-area](https://www.linkedin.com/company/greater-zurich-area)

Greater Zurich Area: Where Tech Meets